

Gippsland

LIMOUSIN Breeders

www.gippslandlimousin.com.au

Autumn 2020

Promotion Catalogue



Select number of entries offered for Sale by **PRIVATE TREATY.**

5 Bulls

6 Cow & Calf units

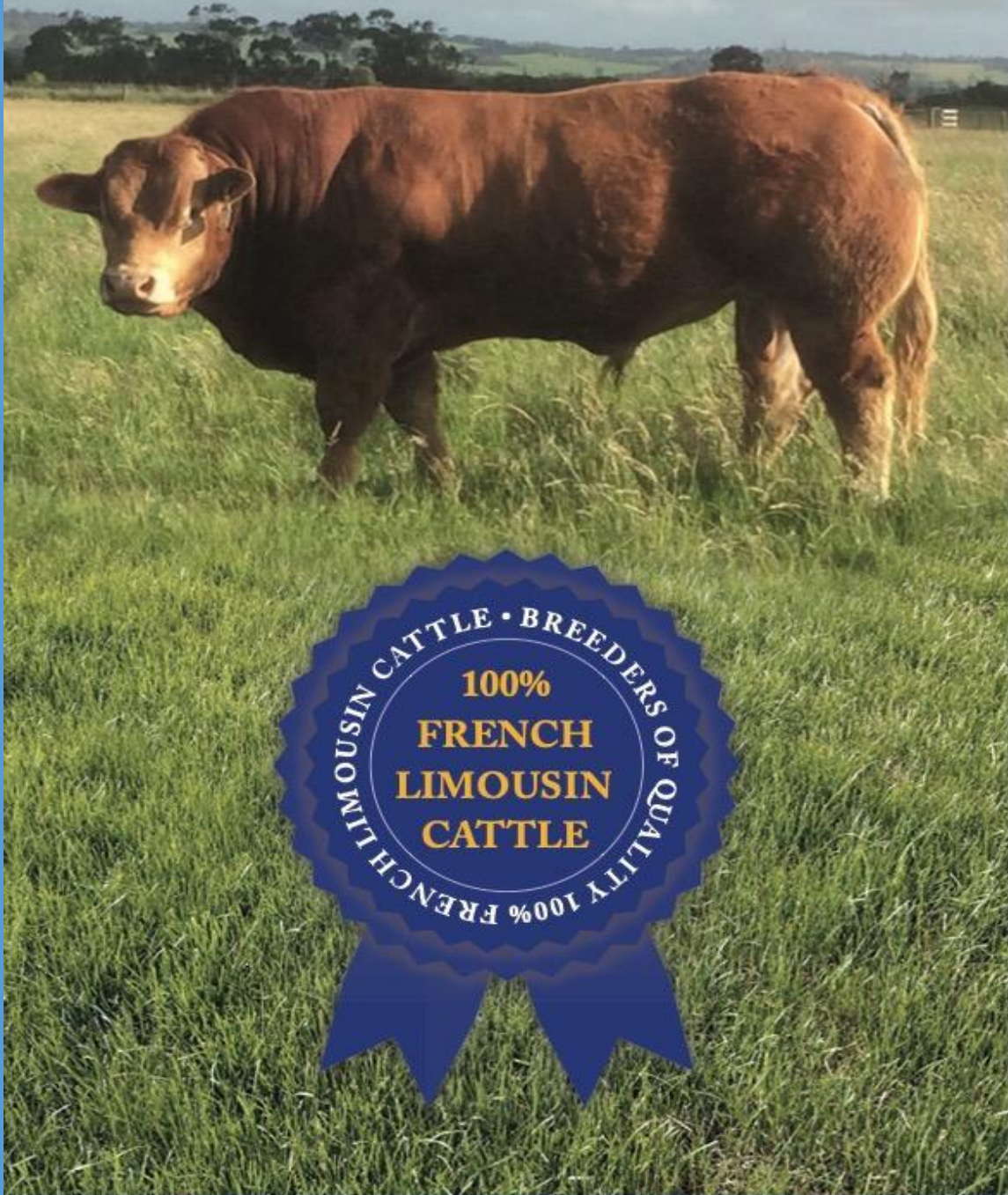
1 Unjoined Heifer

Paddock inspections

Welcome by appointment with breeder

HRL HILLRIDGE LIMOUSINS

True Performance



George Addamo

0409 145 824 | george@eastdist.com

221 Little Moe River Road, Darnum Vic 3822

Inspection by appointment



GIPPSLAND LIMOUSIN BREEDERS PROMOTION GROUP

www.gippslandlimousin.com.au

GIPPSLAND LIMOUSIN BREEDERS

The Gippsland Limousin Breeders Promotion Group (GLBPG) was established more than 40 years ago to support registered Limousin breeders with ongoing development and promotion of the Limousin beef cattle breed within the Gippsland region.

The GLBPG supports registered breeders with ongoing development programs assisted by current technology, advances in breeding, nutrition and record keeping. This ensures breeders have access to the most up to date information available.

Members meet on a regular basis, holding meetings, farm visits and education programs featuring keynote speakers throughout the year.

The GLBPG are registered with the Australian Limousin Breeders Society and all animals offered for sale are registered with the ALBS.

The Limousin breed has proven to be ideally suited to our regions diverse production systems and beef markets. The combination of increased dressing %, carcass yield, feed efficiency and longevity deliver profitability to the farmer, feeder, processor and a high quality eating experience to the consumer.

To view animals' full details and pedigree, please visit the Australia Limousin Breeders Society <http://abri.une.edu.au/online/cgi-bin/i4.dll?1=37293431&2=2928&3=56&5=2B3C2B3C3A&11=5B515A>

Disclaimer: All cattle entered in this catalogue are available for *SALE BY PRIVATE TREATY*, upon paddock inspection and open negotiation with the vendor. The Gippsland Limousin Breeders Promotion Group GLBPG accept no responsibility for private sale negotiation between purchaser and vendor.

EXPLANATION OF THE SUFFIXES TO ANIMAL NAMES IN THIS CATALOGUE

Horn Status: (HP*) Homozygous Polled by DNA test (which has an accuracy of 92%), (HP) Homozygous Polled by progeny test, (2P) Homozygous Polled by Pedigree, (P) Polled, (S) Scurred.

Colour: (HB) DNA tested Homozygous Black, (2B) Homozygous Black by pedigree, (B) Black, (R) Red (not Apricot)

Protoporphyrin Status: (PN) Proto Normal, (PF) Proto free by pedigree, (PC) the animal is a carrier of the abnormal gene for Protoporphyrin, (PS) Proto Suspect (parent of diseased animal), (PU) the animal has not been tested for Protoporphyrin or have parents which have been tested normal or are free by pedigree.

Homozygous: Is the term where an animal has two copies of the particular gene (tested or pedigree) for a trait (colour, polled). An example is Homozygous Polled where all progeny will be polled from that particular animal or Homozygous Black where all progeny will be black.

F94L: (AA) 2 copies, (AC) 1 copy, (2A) 2 copies by pedigree, (CC) no copies.

EXPLANATION OF ESTIMATED BREEDING VALUES

An Estimated Breeding Value (EBV) is an estimate of the genetic merit of that animal for each trait measured.

EBVs are provided for the following traits:

Gestation Length: ranks sires for the time between conception and the birth of a calf. Shorter gestation is indicated by negative EBVs and longer by positive EBVs.

Birth Weight: indicates the genetic potential for birth weight. Positive EBVs indicate higher birth weights and negative EBVs indicate lower birth weights of progeny.

Milk: a key component of fast growth to weaning is the dam's maternal performance. A bull with a high milk EBV should produce daughters which milk well.

200, 400 & 600 Day Weight: give us an estimation of the animal's genetic potential for growth.

Scrotal Size: indicates whether the bull will produce sons with above average or below average scrotal sizes.

Carcase Weight: ranks animals for carcass weight.

Eye Muscle Area: ranks animals for eye muscle area measured at the 12th rib on a 300kg carcass.

Rib Fat: ranks animals for rib fat depth at the 12th rib on a 300kg carcass

Retail Beef Yield: ranks animals for the yield of retail beef cuts from a 300kg carcass.

Intra Muscular Fat: ranks animals for the percentage of intramuscular fat at the 12th rib of a 300kg carcass.

Docility: is expressed as the increase or decrease in the percentage of progeny that will be scored as docile (score 1 or 2). Positive EBVs indicate a higher proportion of progeny that will be scored as docile and negative EBVs indicate a lower percentage of progeny being scored as docile.

Comparing EBVs

The EBVs for Limousins cannot be compared with EBVs for animal of other breeds. They should be compared with the current average EBV for the Limousin breed shown below.

Breed Average EBVs for 2018 Born Calves											
GL	BW	MLK	200	400	600	SS	CWT	EMA	RIB	RBV	DOC
-2.1	+1.5	+7	+19	+33	+45	+1.0	+29	+1.5	+0.0	+0.6	+41

Accuracies

Accuracies are presented with each EBV and give an indication of the amount of information that has been used in the calculation of that EBV. The higher the accuracy the lower the likelihood of change in the animal's EBV as more information is analysed for that animal and its relatives.

Disclaimer

The Estimated Breeding Values (EBVs) contained within this sale catalogue were compiled by the Agricultural Business Research Institute (ABRI) from the data supplied by breeders. Neither the Australian Limousin Breeders' Society or ABRI oversee or audit the collection of this data.





LIMOUSDALE

LIMOUSINS

Gavan & Judy Budge
Yallourn North, Victoria

03 5167 1312
0428 671 312

Quality French Cattle Since 1978

LIMOUSDALE OSCA (PF)

Tattoo: **LMSFP143** DOB: **08/06/2018** Grade: **French Pure**
 Colour: **Apricot** Horn: **Horned** Sex: **M**
 JOUEUR (PEDFP9855) (PU)
 SCAPIN (PEDFW9858) (PU)
 JAPIE (PEDFP9856) (PU)
Sire: URVILLE (IMFFY9212) (PN) (AA)
 DOMINO (PEDFZ8994) (PU)
 OXANE 142 (PEDFT9859) (PU)
 MERVEILLE (PEDFR9857) (PU)
 GOURMAND (PEDFY8935) (PU)
 JOCKEY (IMFFP256) (PN)
 COQUINE (IMFFY8934) (PU)
Dam: KLG FLAMENCO B10 (KLGFB10) (PF)
 HAMMEL GARDER (IMDFL339) (PN)
 TANHOLM PACIFIC (THMFP23) (PF)
 TANHOLM FLAMENCO (IMDFK7) (PN)



February 2020 Southern Limousin BREEDPLAN												
EBV	GL	BW	Milk	200 W	400 W	600 W	Scrotal	CWT	EMA	RIB	RBY%	Doc
ACC	-2.0	+3.7	+0	+24	+33	+43	+0.5	+17				
Index (\$)	53%	48%	37%	46%	46%	45%	28%	33%				
	Vealer Terminal	Domestic Terminal	Self Replacing	Heavy Steer Terminal	Traits Observed: BWT							
	+\$19	+\$17	+\$22	+\$23								

Notes: Early maturing bull with milk blood lines.

LIMOUSDALE OMAR (PF)

Tattoo: **LMSFP149** DOB: **13/06/2018** Grade: **French Pure**
 Colour: **Apricot** Horn: **Horned** Sex: **M**
 JOUEUR (PEDFP9855) (PU)
 SCAPIN (PEDFW9858) (PU)
 JAPIE (PEDFP9856) (PU)
Sire: URVILLE (IMFFY9212) (PN) (AA)
 DOMINO (PEDFZ8994) (PU)
 OXANE 142 (PEDFT9859) (PU)
 MERVEILLE (PEDFR9857) (PU)
 GOURMAND (PEDFY8935) (PU)
 JOCKEY (IMFFP256) (PN)
 COQUINE (IMFFY8934) (PU)
Dam: KLG FLAMENCO B10 (KLGFB10) (PF)
 HAMMEL GARDER (IMDFL339) (PN)
 TANHOLM PACIFIC (THMFP23) (PF)
 TANHOLM FLAMENCO (IMDFK7) (PN)



February 2020 Southern Limousin BREEDPLAN												
EBV	GL	BW	Milk	200 W	400 W	600 W	Scrotal	CWT	EMA	RIB	RBY%	Doc
ACC	-2.0	+3.7	+0	+24	+33	+43	+0.5	+17				
Index (\$)	53%	48%	37%	46%	46%	45%	28%	33%				
	Vealer Terminal	Domestic Terminal	Self Replacing	Heavy Steer Terminal	Traits Observed: BWT							
	+\$19	+\$17	+\$22	+\$23								

Notes: Early maturing bull with milk blood lines.



Quality pure French pedigree cattle

Young ET bulls (polled and horned) available for sale

Viewing available by appointment



Seaview Park farm
59 Seaview School rd
Seaview VIC 3821



www.seaviewparkfarm.com.au

www.facebook.com/seaviewparkfarm

Michael@spfarm.com.au

0404 065 434

SEAVIEW PARK VIKING (P) (PF)

Tattoo: **SPLFP1** DOB: **16/02/2018** Grade: **French Pure**

Colour: **Apricot** Horn: **Polled** Sex: **M**

RFRR MASTER DESIGN (IMUFQ692) (P) (PN)

KAUP'S POLLED HAVANA (IMCFT1924) (P) (PU)

J+R'S TRILLIUM (IMCFN2697) (PU)

Sire: VIKING (IMFFZ4377) (HP*) (PN)

MH WHIPSTICH (IMCFN4253) (P) (PN)

C&S FINDERS KEEPERS 645F (IMCFR1379) (P) (R) (PU)

SOULES QUEEN 103X (IMUFJ8851) (PU)

GOLDEN (IMFFL1813) (PN)

TANHOLM SOVEREIGN (THMFS21) (PF)

TANHOLM OPAL (THMFQ7) (PN)

Dam: TANHOLM Y070 (THMFY70) (PF)

TANHOLM NIKE (THMFN48) (PN)

TANHOLM ROSE (THMFR10) (PF)

TANHOLM NERINA (THMFN56) (PF)



February 2020 Southern Limousin BREEDPLAN												
	GL	BW	Milk	200 W	400 W	600 W	Scrotal	CWT	EMA	RIB	RBY%	Doc
EBV	-0.3	+2.8	+5	+18	+30	+40	+0.6	+21		-0.2	+1.1	
ACC	54%	62%	47%	56%	55%	56%	34%	39%		29%	25%	
Index (\$)	Vealer Terminal	Domestic Terminal	Self Replacing	Heavy Steer Terminal	Traits Observed: BWT							
	+\$27	+\$28	+\$30	+\$27								

Notes: Exceptional 100% pure French polled ET bull by renowned homozygous polled French bull Viking (semen no longer available in Australia or export eligible) out of quality cow. Excellent breed characteristics. Moderate frame with strong legs, excellent top line and back end as you would expect from this breeding. Perfect temperament and suited to cows or heifers. Birth weight 40kg.

Drought Proof your Farm

BROADLANDS LIMOUSINS

Google - Agricultural Insights - Grazing Management Techniques
 You Tube Video - Gabe Brown "Cover Crops for Grazing"

All Sires in Use: Runyl Stetson & Runyl Extra Loyal
 (Canadian Black Poll Sires) and Mandayen Vision
 (Australian Black Poll 13 Trait Leader) that have sired -

- Sydney Show 2019 Supreme Champion Carcase
- Sydney 2019 Champion Trade Steer Carcase
- Melbourne Show Borthwick Champion Steer Carcase



Broadlands Limousins

BAIRNSDALE

Pat Keyte 0414 632 017 - Black & Red Polled Limousin Bulls

MANDAYEN EVEREADY M309 (P) (R) (PF)

Tattoo: MDNPM309 DOB: 12/11/2016 Grade: Pure
 Colour: Red Horn: Polled Sex: M
 HUNT MR JOCK 44J (IMUPU44) (P) (B) (PN) (AA)
 WULFS REALTOR 1503R (IMUPA1503) (HP) (B) (PN) (AC)
 WULFS LENA 1503L (PEDPW9258) (P) (B) (PU)
Sire: MANDAYEN EVEREADY E1385 (MDNPE1385) (P) (B) (PN) (AA)
 DVFC COOKIE MONSTER 108H (IMUPT108) (P) (B) (PN) (AA)
 MANDAYEN SPECIALS COOKIE Z344 (MDNPZ344) (PF)
 RIVERLEA SOMETHING SPECIAL (RLSFN14) (PN)
 RUNL STETSON 850S (IMUPB850) (2P) (HB) (PN) (AA)
 RUNL XTRA-LOYAL 644 X (IMUPF141) (HP*) (HB*) (PN)
 RUNL 294S (PEDPB1971) (P) (B) (PU)
Dam: MANDAYEN KRYSTAL H2219 (MDNPH2219) (P) (B) (PF)
 MANDAYEN GUARDIAN A488 (MDNPA488) (P) (R) (PN) (AA)
 MANDAYEN KRYSTAL F1703 (MDNPF1703) (P) (B) (PF)
 MANDAYEN KRYSTAL D1292 (MDNPD1292) (P) (B) (PF)



EBV ACC	February 2020 Southern Limousin BREEDPLAN											
	GL	BW	Milk	200 W	400 W	600 W	Scrotal	CWT	EMA	RIB	RBV%	Doc
	-3.7	+0.6	+7	+25	+43	+48	+1.2	+37	+2.6	+0.9	-0.5	
	61%	66%	49%	62%	61%	62%	52%	53%	47%	53%	46%	
Index (\$)	Vealer Terminal	Domestic Terminal	Self Replacing	Heavy Steer Terminal	Traits Observed: CE,BWT							
	+\$46	+\$45	+\$44	+\$35								

Notes: Very docile easy to handle polled bull. Medium frame bred for c arcase performance, in the top 5 % for for Rib, Rump & IMF, top 40% EMA. Top 15 % for 200 and 400 day Growth. Suitable for heifers, his breeding includes all of the 4 Major Poll Limousin Bulls in USA, including Runyl Extra Loyal Blood Lines (Dam) that produced the 2019 Sydney Show Supreme Champion Carcase. **OFFERED FOR SALE BY BROADLANDS LIMOUSINS**



Current herd sire

Western • Gold • Kolt

Senior Champion Bull 2018 On-farm Challenge



BILLY CREEK LIMOUSINS

Mark & Deb Reynolds

E: dereynolds@netspace.net.au

Mob: 0427 401 142

440 Hazelwood Estate Rd. Hazelwood, Vic. 3840



BILLY CREEK PRINCE HARRY (PU)

Tattoo: **BCKPP5** DOB: **17/05/2018** Grade: **Pure**
 Colour: **Apricot** Horn: **Horned** Sex: **M**
 SVL POLLED EXCLUSIVE 412T (IMUFC412) (HP*) (R) (PN) (AA)
 MERIDEN POLL HEAVYDUTY (PKRFH70) (HP*) (PN) (AA)
 DONNA VALLEY POLL ALURING LADY (MGWFA603) (P) (PF)
Sire: GARREN PARK LIEUTENANT (LTHPL29) (P) (PF)
 EXLR LATIGO 029M (IMUPX29) (P) (PN)
 GARREN PARK AGGIE (LTHPA16) (P) (PF)
 DONNA VALLEY POLL VERA (MGWPV748) (P) (PF)
 WILLOW PARK XTRA KOOLKID (WPAFX349) (PF)
 PARKDALE DANNY BOY (PDWFD157) (PN)
 FERNLEA YASMIN (FGLFY12) (PU)
Dam: CLIFTONVIEW JENNY (KCBFJ511) (PU)
 DONNA VALLEY ZENITH (MGWFZ404) (PF)
 CLIFTONVIEW CLEOPATRA (KCBFC178) (PU)
 BRUANGIL PARK U-TWO (BPLFU393) (PU)



February 2020 Southern Limousin BREEDPLAN												
	GL	BW	Milk	200 W	400 W	600 W	Scrotal	CWT	EMA	RIB	RBY%	Doc
EBV	-0.7	+1.6	+6	+16	+31	+44	+0.9	+28		-0.1		
ACC	36%	43%	34%	42%	41%	41%	32%	32%		28%		
Index (\$)	Vealer Terminal	Domestic Terminal	Self Replacing	Heavy Steer Terminal	Traits Observed: CE,200WT,600WT(x2)							
	+\$34	+\$37	+\$39	+\$28	Notes: 22 month old bull with excellent depth, thickness and docility. Free delivery in Gippsland.							

BILLY CREEK NORMA JEAN (P) (PF)

Tattoo: **BCKPN30** DOB: **05/12/2017** Grade: **Pure**
 Colour: **Apricot** Horn: **Polled** Sex: **F**
 SVL POLLED EXCLUSIVE 412T (IMUFC412) (HP*) (R) (PN) (AA)
 MERIDEN POLL HEAVYDUTY (PKRFH70) (HP*) (PN) (AA)
 DONNA VALLEY POLL ALURING LADY (MGWFA603) (P) (PF)
Sire: GARREN PARK LIEUTENANT (LTHPL29) (P) (PF)
 EXLR LATIGO 029M (IMUPX29) (P) (PN)
 GARREN PARK AGGIE (LTHPA16) (P) (PF)
 DONNA VALLEY POLL VERA (MGWPV748) (P) (PF)
 TIMOR POLL YUPPIE (TRPY12) (2P) (PF)
 BILLY CREEK FEVOLA (BCKPF8) (P) (PN)
 WHITE LAKES DEWDROP (WLPD47) (P) (PF)
Dam: BILLY CREEK HAWAIIAN GIRL (BCKPH21) (P) (PF)
 WHITE LAKES SIRE POWER (WLPS45) (P) (PN) (AA)
 WHITE LAKES WAHINE MAGIC (WLPW11) (P) (PF)
 WHITE LAKES SHEER MAGIC (WLPS38) (P) (PF)



February 2020 Southern Limousin BREEDPLAN												
	GL	BW	Milk	200 W	400 W	600 W	Scrotal	CWT	EMA	RIB	RBY%	Doc
EBV	-2.5	+2.1	+7	+22	+45	+64	+1.5	+38	+1.5	+0.0	+0.6	+42
ACC	40%	56%	42%	59%	61%	55%	37%	45%	27%	32%	28%	51%
Index (\$)	Vealer Terminal	Domestic Terminal	Self Replacing	Heavy Steer Terminal	Traits Observed: 200WT(x2),400WT,DOC							
	+\$45	+\$51	+\$54	+\$34	Notes: 27 month old heifer with poll bull calf at foot (D.O.B 12/1/20). Free delivery in Gippsland.							

BILLY CREEK PRINCESS MILA (P) (PU)

Tattoo: **BCKPP12** DOB: **29/09/2018** Grade: **Pure**
 Colour: **Apricot** Horn: **Polled** Sex: **F**
 SVL POLLED EXCLUSIVE 412T (IMUFC412) (HP*) (R) (PN) (AA)
 MERIDEN POLL HEAVYDUTY (PKRFH70) (HP*) (PN) (AA)
 DONNA VALLEY POLL ALURING LADY (MGWFA603) (P) (PF)
Sire: GARREN PARK LIEUTENANT (LTHPL29) (P) (PF)
 EXLR LATIGO 029M (IMUPX29) (P) (PN)
 GARREN PARK AGGIE (LTHPA16) (P) (PF)
 DONNA VALLEY POLL VERA (MGWPV748) (P) (PF)
 WESTON PARK ULYSSES (JPEPU186) (P) (PU)
 BRUANGIL PARK WARLORD (BPLPW531) (P) (PU) (AA)
 BRUANGIL PARK T300 (BPLPT300) (PU)
Dam: BRUANGIL PARK EVENTIDE (BPLPE897) (P) (PU) (2A)
 MALIBU (IMFFR6196) (PN)
 BRUANGIL PARK APHENA (BPLPA711) (PU) (AA)
 BRUANGIL PARK XANTHOSIA (BPLPX609) (P) (PU)



February 2020 Southern Limousin BREEDPLAN												
	GL	BW	Milk	200 W	400 W	600 W	Scrotal	CWT	EMA	RIB	RBY%	Doc
EBV	-3.2	+1.1	+6	+17	+33	+46	+1.0	+30	+1.6	-0.1	+0.8	+56
ACC	49%	52%	42%	49%	49%	48%	38%	38%	26%	31%	27%	52%
Index (\$)	Vealer Terminal	Domestic Terminal	Self Replacing	Heavy Steer Terminal	Traits Observed: 200WT,400WT(x2),DOC							
	+\$36	+\$40	+\$42	+\$30	Notes: 18 month old heifer. Poll unjoined. One of our best who has been to local shows. Free delivery in Gippsland.							

TURRUM
CREEK



Contact- David Turner

Mob: 0421 333 803

Email: david@turrumcreek.com.au

Web: www.turrumcreek.com.au



Turrum Creek Limousin was formed in 2013 after several years of commercially breeding Limousin cattle.

Over the first few years, our stud herd was developed with stock sourced from Tarraleaha, Keystone Genetics, Sharoy Park & various other Limousin breeders. Later, with a focus on depth of body and softness, we sourced from Garren Park Genetics, and Western Gold, as well as introducing AI programs using Sires such as Wulfs Excelsior, B-Bar Brick & various other quality AI Sires.

Some of the females available now are still these original cattle given their quality, doing ability and maternal traits, or our own which are showing great attributes and proving to be a credit to the Limousin Breed.

Without supplementary feeding our cattle have been bred to thrive on natural pastures and in all conditions. What you see is definitely what you get!

Due to moving toward a more commercially focused program, ALL of our herd is currently for sale. The following are a selection of the more than 50 Stud females and calves available for purchase.

We hope you take a look at our offering and, please feel free to drop us a line and if you'd like to view our herd to pick for yourself, you're welcome any time.

A Full list of our females is available on request.

Please Note: PTIC status of listed entries TBC, Please Contact for results.

TARRALEAHA G24 (PU)



Tattoo: **CPWPG24** DOB: **14/11/2011** Grade: **Pure**
 Colour: **Apricot** Horn: **Horned** Sex: **F**
 VAINQUEUR (PEDFK5866) (PU)
 GALANT (PEDFS8369) (PU)
 DALIDA (PEDFS8366) (PU)
Sire: OPERA (IMFFT8778) (PN)
 GAUCHO (PEDFY8785) (PU)
 LAMPROIE (PEDFY8787) (PU)
 GERALDINE (PEDFY8786) (PU)
 RAMSES (IMFFV8375) (PN)
 TARRALEAHA BANJO (CPWFB4) (PU)
 TUERONG PARK WONDERFUL (TPSFV995) (PU)
Dam: TARRALEAHA ELLA (CPWPE10) (S) (PU)
 INGLESIDE XAVIER BELLARMINE (FELPX68) (PU)
 INGLESIDE ZARAH (FELPZ104) (P) (PU)
 INGLESIDE XAVIER DEIDRE (FELPX65) (P) (PU)

February 2020 Southern Limousin BREEDPLAN												
	GL	BW	Milk	200 W	400 W	600 W	Scrotal	CWT	EMA	RIB	RBY%	Doc
EBV	-1.7	+1.9	+3	+14	+24	+32	+0.1	+19				
ACC	68%	47%	40%	41%	42%	41%	28%	30%				
Index (\$)	Vealer Terminal	Domestic Terminal	Self Replacing	Heavy Steer Terminal	Traits Observed: GL							

Notes: Large Frame and excellent maternal qualities. Shes produces for us year in year out. Quality all rounder that will put everything into her calf. Sells with Bull Calf at Foot born 20/10/2019 by Turrum Creek Nixon & Sells Back to same joining. Great 3 in 1 opportunity.

Offered for sale by Turrum Creek Limousin

SHAROY PARK GISELLE (P) (PU)



Tattoo: **SATPG14** DOB: **04/05/2011** Grade: **Pure**
 Colour: **Apricot** Horn: **Polled** Sex: **F**
 WULFS CHOICE 1026C (IMUPN1026) (HP) (PN)
 HAGLEY SOMERVILLE (HCSPS154) (P) (PF)
 ROUND HILL JOY (RHRPJ31) (PN)
Sire: TANDARA DRUM-ROLL (SACPD343) (P) (PU)
 IONESCO (IMFFN206) (PN) (AA)
 TANDARA BELLA DONNA (SACPB232) (PU)
 BILLABONG RIGARDA (BLBPR90) (PU)
 FAVORI (MATCHING) (IMFFP1552) (PS)
 THE PINES GURUL (BHRFG194) (PU)
 SUNDOWNER RANCHES KATIE (SDRFU1) (PU)
Dam: SHAROY PARK 2014 (SATFZ14) (PU)
 LAKESIDE REALISM (JLLFR66) (PF)
 CLEARVUE PARK UCAN-CAN (CPPFU17) (PU)
 CLEARVUE PARK RAYLENE (CPPFR106) (PU)

February 2020 Southern Limousin BREEDPLAN												
	GL	BW	Milk	200 W	400 W	600 W	Scrotal	CWT	EMA	RIB	RBY%	Doc
EBV	-1.6	+1.2	+5	+14	+23	+29	+0.5	+21				
ACC	42%	40%	33%	38%	39%	38%	27%	31%				
Index (\$)	Vealer Terminal	Domestic Terminal	Self Replacing	Heavy Steer Terminal	Traits Observed: CE							

Notes: Another one of the girls from Sharoy Park that has been in our Herd for years and always produces! A moderate framed cow with great shape. Sells with Heifer calf at foot born 20/2/2020 by Turrum creek Nixon.

Offered for sale by Turrum Creek Limousin

TURRUM CREEK JANNAN (P) (PU)



Tattoo: **TCTPJ1** DOB: **28/12/2013** Grade: **Pure**
 Colour: **Apricot** Horn: **Polled** Sex: **F**
 WULFS GUARDIAN 5074G (IMUPS5074) (P) (B) (PN) (AA)
 BRUANGIL PARK DEMOCRAT (BPLPD844) (P) (PF)
 BRUANGIL PARK T323 (BPLPT323) (P) (PF)
Sire: TANDARA GRINDER (SACPG496) (P) (PF)
 VENTURE (IMUFH30) (PC)
 TANDARA BLISS (SACPB234) (P) (PN)
 CLIFTON VIEW WINNA (KCBPW2) (P) (PU)
 HAGLEY SOMERVILLE (HCSPS154) (P) (PF)
 TANDARA DRUM-ROLL (SACPD343) (P) (PU)
 TANDARA BELLA DONNA (SACPB232) (PU)
Dam: SHAROY PARK GANDY (SATPG636) (P) (PU)
 GABRIELLE BRENDON (GDSFB48) (PU)
 SHAROY PARK DANDY (SATFD62) (PU)
 MISTLEA BRANDY (REAFB62) (PF)

February 2020 Southern Limousin BREEDPLAN												
	GL	BW	Milk	200 W	400 W	600 W	Scrotal	CWT	EMA	RIB	RBY%	Doc
EBV	-3.9	+1.1	+7	+17	+31	+38	+0.6	+27				
ACC	35%	39%	31%	38%	37%	36%	26%	29%				
Index (\$)	Vealer Terminal	Domestic Terminal	Self Replacing	Heavy Steer Terminal	Traits Observed:							

Notes: Some Sharoy Park breeding here and wow what a great job! Shes one of my absolute favourites and has it all. She has exceptional width and holds her condition well. Again, exceptional docility and maternal traits. Sells joined to Turrum Creek Nixon. **Offered for sale by Turrum Creek Limousin**

TURRUM CREEK LEE LEE (P) (PU)

Tattoo: **TCTPL1** DOB: **24/02/2015** Grade: **Pure**
 Colour: **Apricot** Horn: **Polled** Sex: **F**

VIKING (IMFFZ4377) (HP*) (PN)
 KLG POLLED FERRARI (KLGFF10) (P) (PN) (AA)
 KLG DONA A29 (KLGFA29) (PU)
Sire: KEYSTONE POLLED JACK BLACK (KLGJ17) (P) (PF)
 MANDAYEN VISION Y329 (MDNPY329) (HP) (B) (PN) (AA)
 BOGONG VIEW ABIGAIL (BVSPF69) (P) (PF)
 STEVENS ABIGAIL B25 (GHSPB25) (P) (PF)
 TANHOLM CLAUS (IMDFG1) (PN) (AA)
 LILLICO CARL (JBEP494) (PU)
 INGLESIDE WONDER (FELPW55) (P) (PU)
Dam: SHAROY PARK FARLY (SATPF585) (PU)
 DURHAMDALE WHITBY (DDSF31) (PU)
 SHAROY PARK CARLY (SATPC67) (S) (PU)
 DURHAMDALE A067 (DDSPA67) (P) (PU)



February 2020 Southern Limousin BREEDPLAN

Notes: One of our early Joining choices that paid off! A quality young cow that has it all, depth of body, traditional width, maternal traits, milking ability and holds condition year round. She has an A1 Temperament to match and definatly one of my favourites! Sells with Heifer calf at foot born 15/2/2020 by Turrum Creek Nixon (Richmond Zodiac / Garren Park Jewel E8). **Offered for sale by Turrum Creek Limousin**

BALLINA LUNA (P) (PF)

Tattoo: **PMWPL300** DOB: **23/06/2015** Grade: **Pure**
 Colour: **Apricot** Horn: **Polled** Sex: **F**

IVY'S SHAZAM (IMCPB15) (HP) (PN)
 IVY'S UNDERPRESSURE 43U (IMCPD1183) (HP*) (PN)
 ANDERS PRIMADDONA (PEDPZ6856) (P) (PU)
Sire: GARREN PARK HUCKLEBERRY (LTHPH38) (P) (PF)
 BODELL YOUR KIDDING BLR 169Y (IMCFJ23) (PN) (AA)
 DONNA VALLEY POLL JEWEL X1013 (MGWPX1013) (P) (PF)
 LLOYD'S JEWEL (DLLPJ21) (P) (PN)
 DONNA VALLEY VENGEANCE (MGWPV733) (P) (PF)
 DONNA VALLEY POLL ZIPPER (MGWPZ426) (P) (PF) (AA)
 DONNA VALLEY RAZZAMATAZ (MGWFR372) (PF)
Dam: BALLINA FREEDOM (PMWPF190) (P) (PF)
 DONNA VALLEY POLL BLK QUINN (MGWPQ263) (P) (B) (PN)
 DONNA VALLEY POLLED URANA (MGWPU587) (P) (B) (PF)
 MOONBOOI F158 (AHCPF158) (PN)



February 2020 Southern Limousin BREEDPLAN

EBV ACC	GL	BW	Milk	200 W	400 W	600 W	Scrotal	CWT	EMA	RIB	RBY%	Doc
	-2.5 39%	+1.0 62%	+6 37%	+18 56%	+31 53%	+48 55%	+1.1 41%	+30 37%	+0.0 26%	-0.4 31%	+0.6 27%	+39 39%
Index (\$)	Vealer Terminal	Domestic Terminal	Self Replacing	Heavy Steer Terminal	Traits Observed: BWT,200WT,DOC							
	+\$34	+\$41	+\$43	+\$30								

Notes: Purchased at the Limousin National Show and Sale as a heifer, is super quiet and a quality all round unit large frame and plenty of length in this girl. Sells *PTIC to Turrum Creek Ned Kelly (Keystone Polled King Kong / Western Gold Kiesha). **Offered for sale by Turrum Creek Limousin**



Turrum Creek Limousin

Contact- David Turner Mob: 0421 333 803

Email: david@turrumcreek.com.au

Web: www.turrumcreek.com.au

ASK US ABOUT

I AM LIMO.

CERTIFIED LIMOUSIN BEEF

CERTIFIED

LIMOUSIN BEEF

AUSTRALIAN PREMIUM AWARD WINNING YEARLING BEEF

Limousin beef has a treasured European Heritage dating back hundreds of years, and has now been perfected by Australia's finest Cattleman! Limousin Carcase Beef has been awarded more Royal Show Champions than any other breed! "Certified Limousin Beef" delivers an amazing tenderness and exceptional flavour like no other yearling beef! That's why it's the Number 1 breed of cattle in Europe! Ask your Butcher today about "Certified Limousin Beef".

Using the CERTIFIED LIMOUSIN BEEF Ear Tags with the I AM LIMO logo provides an important tool in identifying and promoting Limousin infused cattle in the market place. ALBS members and their commercial clients who use the Ear Tags in sale cattle will greatly assist in promoting the breed and also Buyers and Agents that are looking for Limousin infused cattle.



YOU WANT VALUE?

Limousin Infused cattle give your herd:

- Hybrid Vigour !
- Improved Dressing %
- Improved Yield !
- Ease of Calving
- Excellent Fertility
- Docility !

Contact the office to find out more

www.limousin.com.au

Limousin Australia 02 6771 1648 office@limousin.com.au



LIMOUSIN

Carcase, Yield, Efficiency.

GLBPG Member contact details.

Billy Creek Limousins

Mark & Deb Reynolds
440 Hazelwood Estate Road
Hazelwood, Victoria 3840
Mob: 0427 401 142
E: dereynolds@netspace.net.au

Broadlands Limousins

Patrick Keyte
59 Pearson Street
Bairnsdale, Victoria 3875
Mob: 0414 632 017
E: broadlands@vic.australis.com.au

Debonair Limousins

Greg Price
52 Wheelbarrow Road
Trafalgar, Victoria 3824
Mob: 0419 519 099
E: debonair8@bigpond.com

Hillridge Limousins

George Addamo
735 Longwarry Road
Modella, Victoria 3816
Mob: 0409 145 824
E: george@eastdist.com

Lara Limousin Stud

Gavan O'Connell & Judy Porritt
253 Overpass Road
French Island, Victoria 3921
Mob: 0418 356 598 Gavan
Mob: 0409 575 500 Judy
E: larafarmfi@gmail.com
W: www.larafarmfrenchisland.com.au

Laverna Park Limousins

Wayne & Alison Sanders
1825 Korumburra-Wonthaggi Rd
Lance Creek, Victoria 3995
Ph: (03) 5657 4429
Mob: 0409 722 317
E: wayne@lavernapark.com.au
W: www.lavernapark.com.au

Limousdale Limousins

Gavan & Judy Budge
205 Quarry Road
Yallourn North, Victoria 3825
Ph: (03) 5167 1312
E: budgies5@aapt.net.au

Sharoy Park Limousins

Alan & Liz Griffin
151 Hamiltons Road
Warragul South, Victoria 3821
Ph: (03) 5626 1222
Mob: 0418 128 102
E: lizal@warragulearth.com.au
W: www.sharoyparklimousins.com

Seaview Park Farm

Michael & Marketa Mordue
59 School Rd.
Seaview Victoria 3821
Mob: 0415 312 966
E: michael@spfarm.com.au
W: www.seaviewparkfarm.com.au

Turrum Creek Limousins

David & Kristen Turner
230 Officer Road
Pakenham, Victoria 3809
Mob: 0421 333 803
E: david@turrumcreek.com
W: www.turrumcreek.com.au

Easy To Manage Cattle
Bred to put \$ in your pocket!



2019 Drop Heifers

Sharoy Park Limousin Stud

Pure French, Polled & Black
Bulls Cows & Calves, Heifers

www.sharoypark.com.au

Alan & Liz Griffin Mob: 0408 128 102

Warragul South

Inspections welcome by appointment



2019 Drop Bulls

Conveniently Located at **151 Hamiltons Road Warragul Sth.** {2 minutes from Lardner Park}.

We have been breeding Limousin for 20 years; maintaining a focus on temperament, calving ease and softness without sacrificing performance & structure.

MUSCLE UP WITH LIMOUSIN

for heavy weight profits

Are you missing out?

Limousin sired heifers often make the same price per kg as steers due to their superior carcass attributes!



Invest in Limousin genetics and take advantage of the unique Limousin Muscling Gene which can get your beef herd producing up to:

19% more high value cuts

8% more in yield of retail cuts

6-11% more tenderness

...with no extra feed!

Source: Dr Wayne Pitchford, University of Adelaide